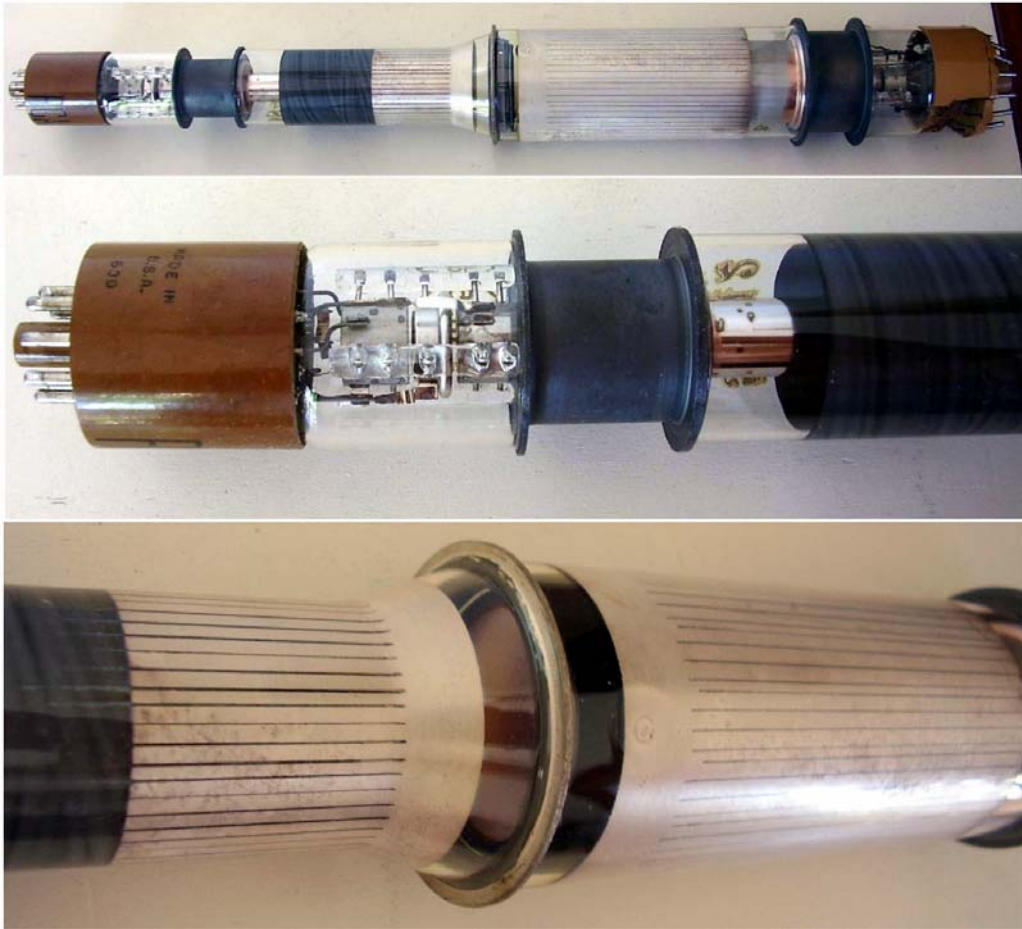


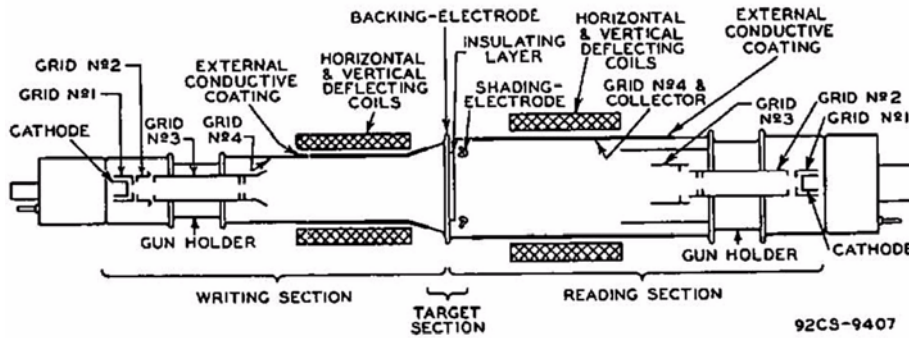
6896 / 1855 - Graphecon Scan Converter



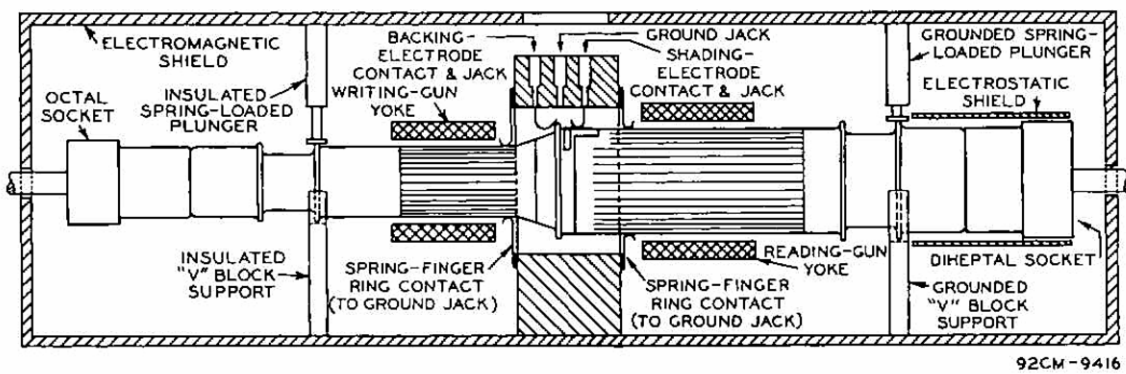
- Click on image to enlarge.

Graphecon was the RCA registered mark for this family of tubes, intended to convert radar images from one time base to another. These devices were mainly used to convert PPI images to TV raster ones, in order to display radar information on standard CRT monitors or on video projectors. Their usefulness can be evident when considering the complexity of large PPI indicators, with rotating deflection coils or even with rotating CRTs. A scan converter tube made it possible to repeat the PPI radar images on low cost video monitors or to add maps acquired by means of simple flying spot scanners and even to add characters generated by character generator tubes, as this [CK1414](#), giving detailed information on targets and their position.

Originally introduced with RCA proprietary code as 1855, the tube was registered in February 1958 as 6896, RMA release No. [2112](#).



- Internal arrangement of the tube. From left the writing section with its external deflection coils, the target screen with built-in storage capabilities and the reading section with its own set of external deflection coils. Click on image to enlarge.



- Typical mechanical arrangement in a magnetic shielding enclosure. Click to enlarge.