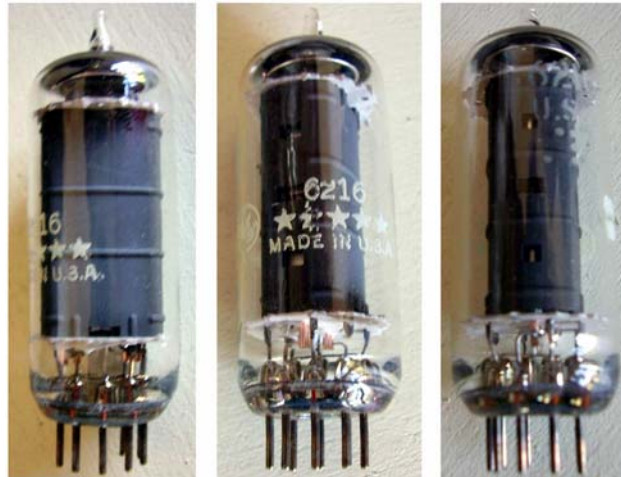


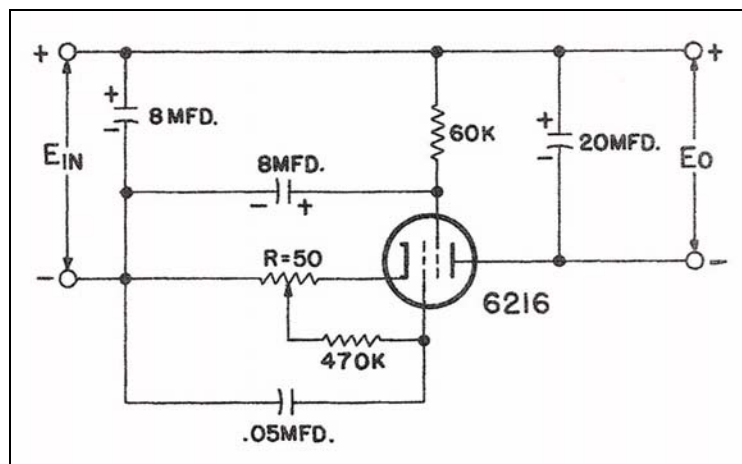
6216 – Beam Amplifier, Electronic Chocke



Miniature beam power amplifier intended to operate as electronic replacement for iron-core filter chokes in airborne and vehicular applications. In appropriate circuits it can be equivalent as per performance to a 12-henry filter choke of 100 mA and 350 ohm ratings. CBS Hytron, March 1953. Data in the RMA record [1165](#).

10 W max plate power dissipation. 6.3 V at 1.2 A heater.

In the application circuit below, with 400 volt in input, the 6216 can deliver 335 volt at 110 mA to the load, with ripple not exceeding 210 mV.



- Typical application as electronic chocke replacement