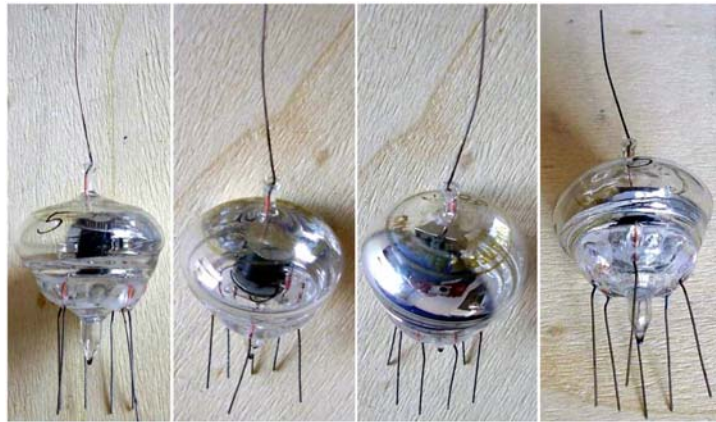


384A – VHF Pentode

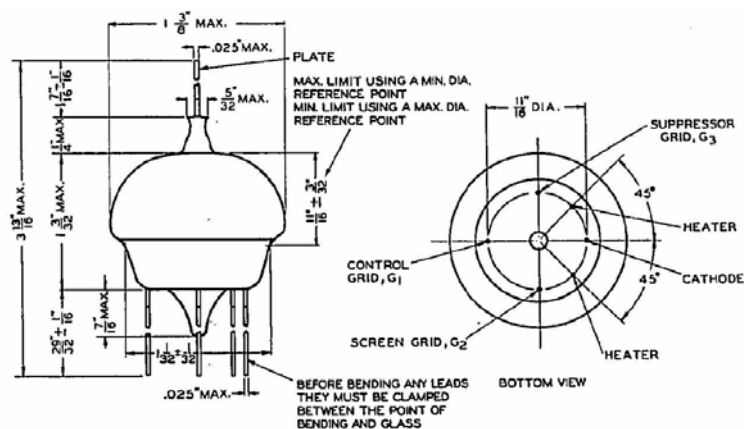


RF VHF pentode, member of a pre-war VHF family developed by Western Electric, family also including based types. Small ‘mushroom’ shape to keep leads as short as possible. During WWII these tubes evolved into miniature types, as the popular 6AK5.

Gm 4 mS.

0.175A at 6.3V heater.

Western Electric



384 A