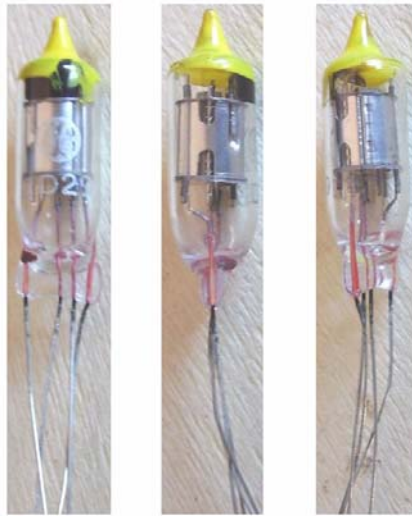


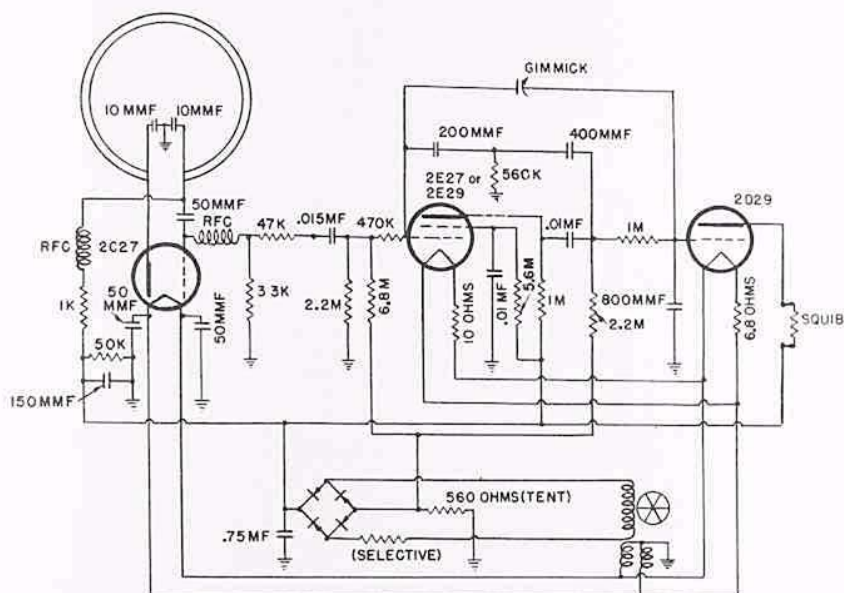
2D29 – Cold-Cathode Thyatron



Ruggedized subminiature tetrode thyatron. Designed for use as igniter driver in the T-172 proximity fuze for mortar shells.

Other tubes used in the same fuze were the 2C27, RF proximity sensor, and the 2E27 or the 2E29 as signal amplifier. Power was generated by a small two windings propeller-driven alternator, the low-voltage CT winding driving filaments.

Source: Tube Collector, August 2013.



T-172 MORTAR SHELL FUZE—Major innovation in this proximity fuze circuit is loop antenna. Burst height over water was 23 ft. Uses reaction-grid-detector circuit.—A. V. Astin,

Editor, "Radio Proximity Fuzes for Fin-Stabilized Missiles," Div. 4, NDRC, Vol. 1, 1946 (available from Clearinghouse, Springfield, Va.), p 244.